

FOR LEASE

CBRE

POMPANO BEACH TRUCK PARKING FACILITY

1801 NW 15TH Avenue
Pompano Beach, FL 33069



PROPERTY HIGHLIGHTS

- + Prime 4.03 acre truck parking lot zoned I-1
- + 100% paved with 53' semi turning radius
- + The site will have 91 striped parking spaces for trailers
- + Fully fenced and secured site
- + Office/guard house
- + 5,421,968 people, 87% of South Florida's population lives within a 60-minute drive of the property
- + Strategic Broward County location
 - + 1.5 miles to I-95, 1.4 miles to the Florida Turnpike
 - + Centrally located between Palm Beach & Miami

NEIGHBORING COMPANIES

CONTACT US

LARRY GENET
Executive Vice President
+1 786 496 0440
larry.genet@cbre.com

TOM O'LOUGHLIN
Executive Vice President
+1 954 356 0468
tom.oloughlin@cbre.com

OWNED AND MANAGED BY

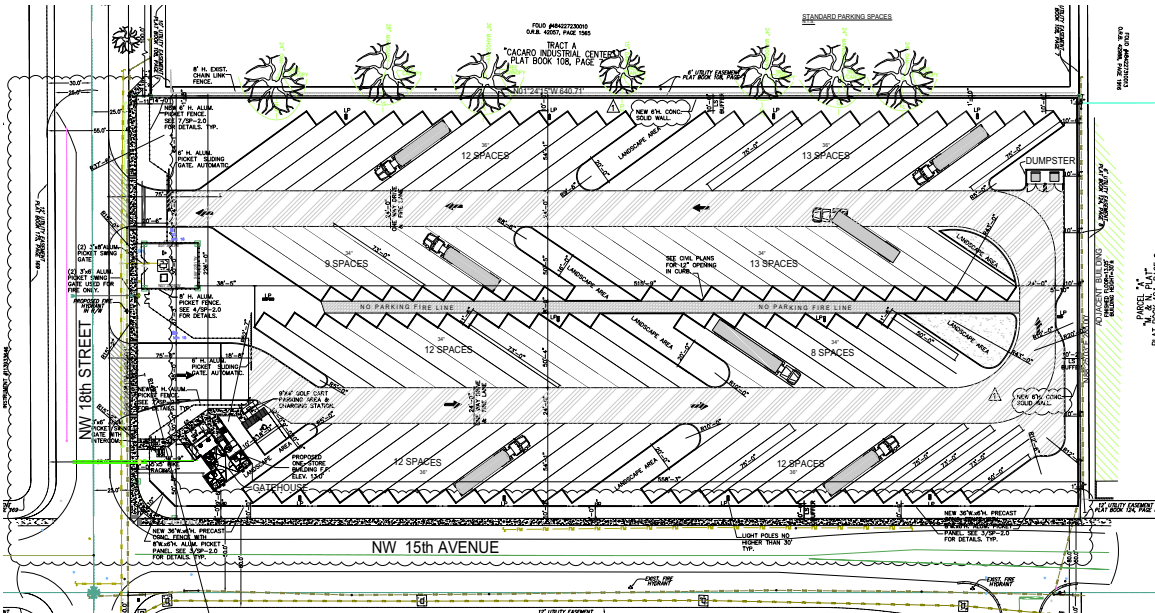


FOR LEASE

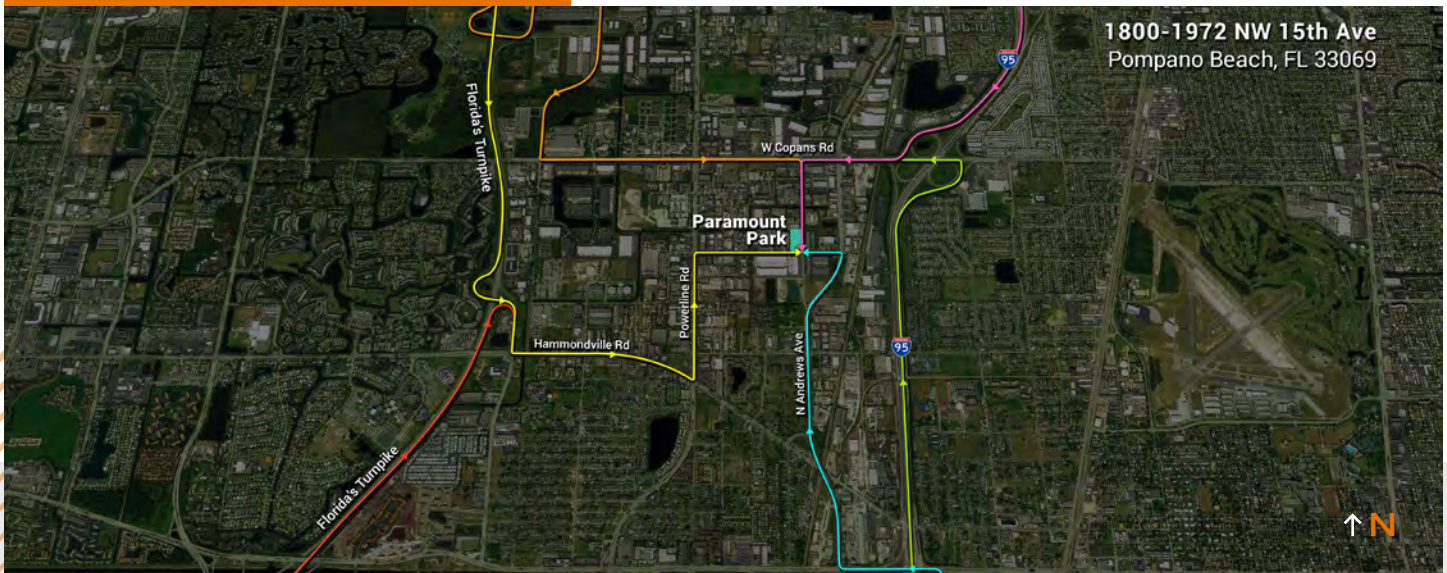
POMPANO BEACH TRUCK PARKING FACILITY

1801 NW 15TH Avenue
Pompano Beach, FL 33069

SITE PLAN



PROPERTY ACCESS



© 2023 CBRE, Inc. All rights reserved. This information has been obtained from sources believed reliable, but has not been verified for accuracy or completeness. You should conduct a careful, independent investigation of the property and verify all information. Any reliance on this information is solely at your own risk. CBRE and the CBRE logo are service marks of CBRE, Inc. All other marks displayed on this document are the property of their respective owners, and the use of such logos does not imply any affiliation with or endorsement of CBRE. Photos herein are the property of their respective owners. Use of these images without the express written consent of the owner is prohibited.