

FOR LEASE

3918 Telephone Road, Dallas, TX 75241

±9,000 SF on ±13.6 ACRES



AGENTS

Matt Elliott, SIOR

214.256.7161

MELLIOTT@NAIRL.COM

Rick Medinis, SIOR

214.256.7116

RMEDINIS@NAIRL.COM




AMENITIES + LOCATION

 ± 3,700 SF Office & ± 5,200 SF Shop

 3 Drive-Thru Bays & Concrete Apron

 ± 18'-22' Clear Height

 ± 13.6 Acres

ADDITIONAL AMENITIES

- Freestanding Shop & Office Space
- Lighted & Fenced Outside Storage
- 30 Paved Car Parks & 2 Handicapped Car Parks
- Remainder of Site is Crushed Gravel
- Located Just South of I-20 Between I-35E & I-45

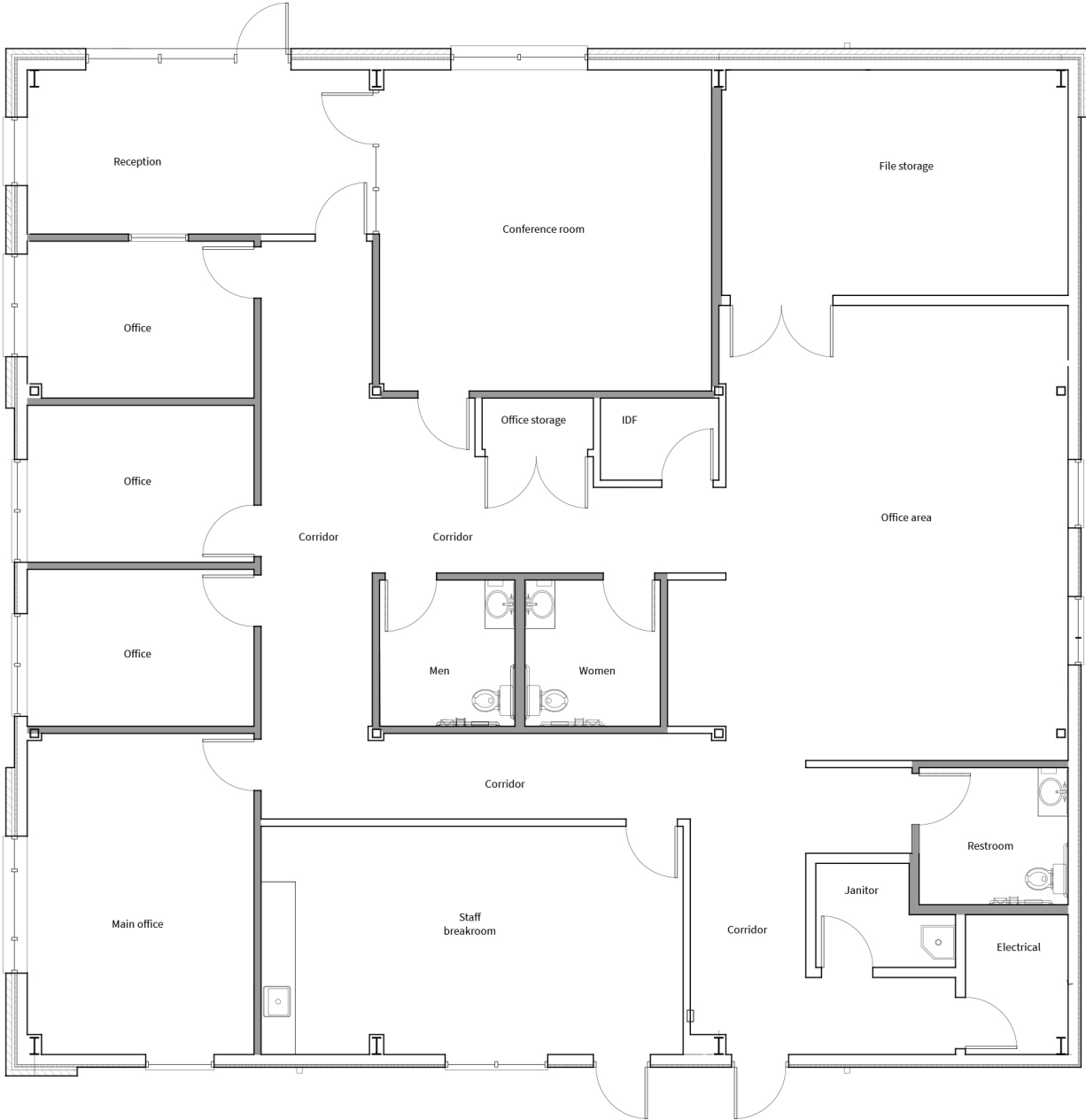


DISTANCE TO

- 2.4 Miles to I-20
- 2.8 Miles to I-45
- 4.5 Miles to I-35E
- 13.2 Miles to Dallas CBD
- 18.4 Miles to Love Field Airport
- 32.8 Miles to DFW International Airport

FOR LEASE 3918 Telephone Road | Dallas, TX 75241

FLOOR PLAN



FOR LEASE 3918 Telephone Road | Dallas, TX 75241

AERIAL

DOWNTOWN DALLAS

+ 5,200 SF SHOP
+ 3,700 SF OFFICE

TELEPHONE RD

+ 13.6 ACRES

FOR LEASE 3918 Telephone Road | Dallas, TX 75241

NEIGHBORING COMPANIES



FOR LEASE 3918 Telephone Road | Dallas, TX 75241

CONTACT US



AGENTS

Matt Elliott, SIOR

214.256.7161

MELLIOTT@NAIRL.COM

Rick Medinis, SIOR

214.256.7116

RMEDINIS@NAIRL.COM



4851 LBJ Freeway, 10th Floor | Dallas, TX 75244 | NAIRL.com

THE INFORMATION CONTAINED HEREIN HAS BEEN GIVEN TO US BY THE OWNER OF THE PROPERTY OR OTHER SOURCES WE DEEM RELIABLE. WE HAVE NO REASON TO DOUBT ITS ACCURACY, BUT WE DO NOT GUARANTEE IT. ALL INFORMATION SHOULD BE VERIFIED PRIOR TO PURCHASE OR LEASE.